

Fig. 3: Flow chart showing fuzzy inference system

2.4. Working Memory

"Working memory called as context which creates workspace for a problem generated by the inference engine from the information provided by the user". The facts and hypothesis generated during reasoning are stored in the working memory. Working memory automatically created in Matlab, as and when the program is loaded. Flowcharts showing the selection of bridge site, bridge substructure and bridge superstructure are shown in figure 4, 5 and 6 respectively. To build a practical system knowledge is acquired through experts, textbooks, codes and practical site data of 9 existing bridge sites.

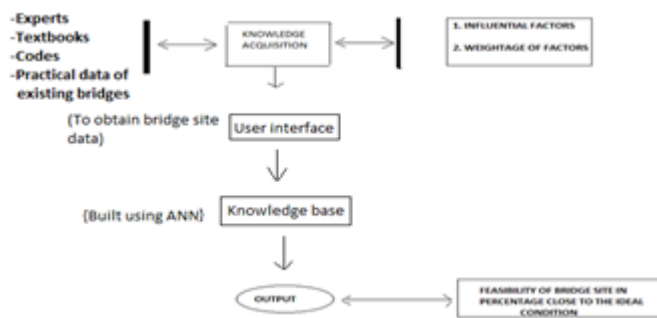


Fig. 4: Flowchart – Bridge site selection system

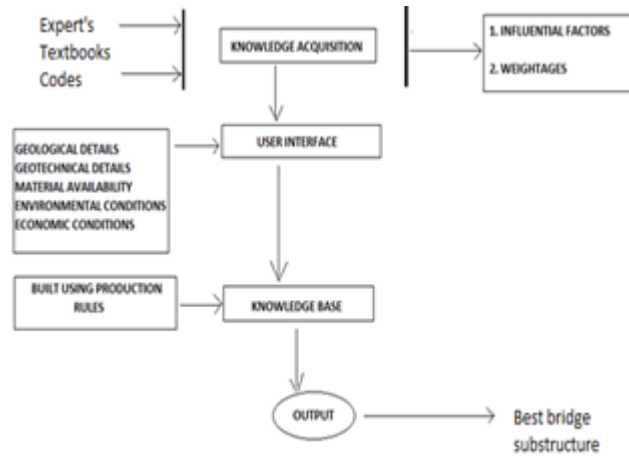


Fig. 5: Flowchart: Bridge substructure selection system

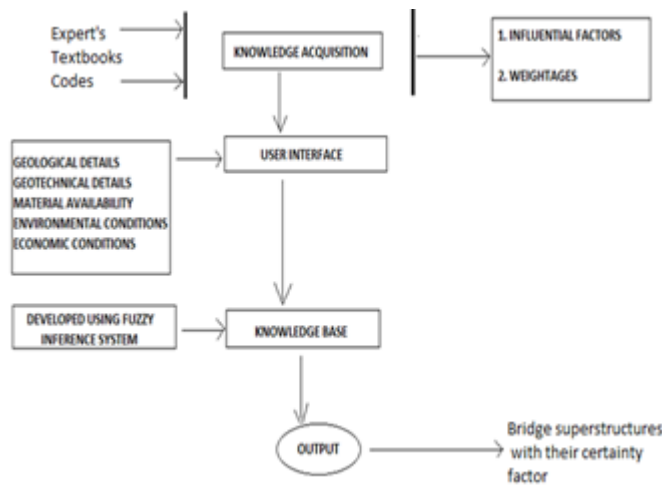


Fig. 6: Flowchart: Bridge superstructure selection system

Figure 4, 5 and 6 shows the work flow for the system design of “expert system for the selection of bridge site, bridge substructure and bridge superstructure”. User interface components collects all the inputs needed from the user for taking decision and output components consists of the suitability of bridge site in percentage close to the ideal condition, best bridge substructure and bridge superstructure suitable for the site conditions. Inference engine uses the knowledge stored in the knowledge base and draws the output.

3. Results and Discussion

Expert system for the bridge site selection is designed using artificial neural network. ANN is trained from the data of 9 existing bridge sites situated in Palakkad (D), Kerala (S) of South India (SI). Network input is of size [27X9] and output matrix is of size [1X9]. Network architecture used in the system design is as shown in figure 7.

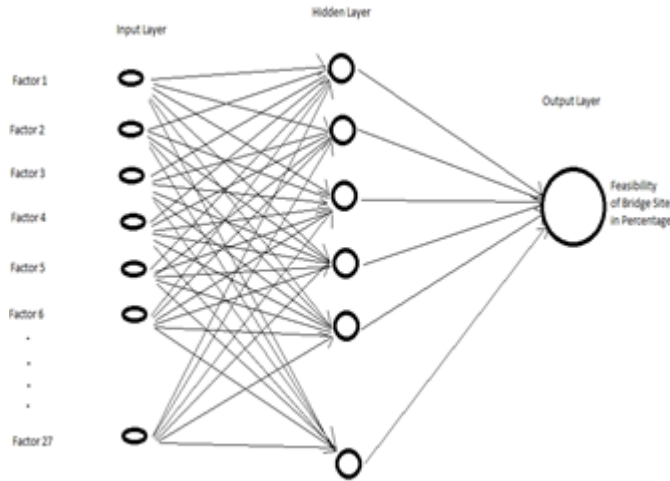


Fig. 7: Multilayer Network Architecture

A feed forward network is created initially with 10 hidden neurons and trained on the collected data of bridge sites then simulated. Since the network performance was not satisfactory, hidden neurons is increased to 20 to achieve maximum performance. The graph of network performance is shown in figure 8.

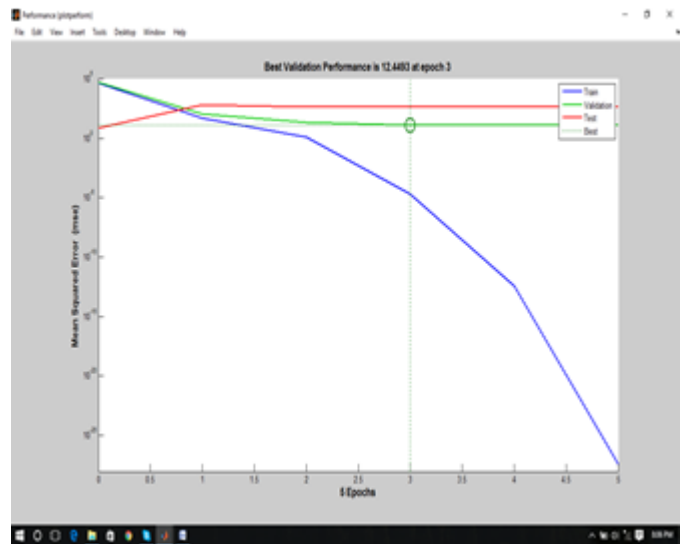


Fig. 8: Performance Graph

The training record structure is given below.

Network training is set to stop once the gradient reaches minimum. Best validation performance is achieved at epoch 3.

tr =

```

trainFcn: 'trainlm'
trainParam: [1x1 struct]
performFcn: 'mse'
performParam: [1x1 struct]
derivFcn: 'defaultderiv'
divideFcn: 'dividerand'
divideMode: 'sample'
divideParam: [1x1 struct]
    
```

```

trainInd: [2 3 5 6 7 8 9]
valInd: 1
testInd: 4
stop: 'Minimum gradient reached.'
num_epochs: 5
trainMask: {[NaN 1 1 NaN 1 1 1 1]}
valMask: {[1 1 1 1 NaN 1 NaN 1]}
testMask: {[1 NaN 1 1 1 1 NaN 1 NaN]}
best_epoch: 3
goal: 0
states: {'epoch' 'time' 'perf' 'vperf' 'tperf' 'mu' 'gradient'
'val_fail'}
epoch: [0 1 2 3 4 5]
time: [0.1320 0.2990 0.3660 0.4340 0.5040 0.5630]
perf: [4.4052e+04 53.4344 1.2755 2.1228e-05
3.9020e-13 3.8226e-28]
vperf: [5.3607e+04 117.9988 21.3055 12.4493 12.4641
12.4641]
tperf: [7.2088 684.6697 443.1215 440.1269 439.8990
439.8989]
mu: [1.0000e-03 1.0000e-04 1.0000e-05 1.0000e-06
1.0000e-07 1.0000e-08]
Gradient: [9.4145e+04 2.2086e+03 465.2611 1.4860
2.6995e-04 4.0718e-12]
val_fail: [0 0 0 0 1 2]
best_perf: 2.1228e-05
best_vperf: 12.4493
best_tperf: 440.1269
    
```

Expert system for the bridge substructure is designed using if- else conditional statements[5]. The output of the system displays list of substructures suitable for the bridge site. The system also provides provision to add or delete the substructure types from the system.

Bridge superstructure is designed using fuzzy rules.

Triangular membership function shown below is used in the design.

$$F(P; x, y, z) = \left\{ \begin{array}{ll} 0 & \text{if } P \leq x \\ (P-x)/(y-x) & \text{if } x \leq P \leq y \\ (z-P)/(z-y) & \text{if } y \leq P \leq z \\ 1 & \text{if } P \geq z \end{array} \right\}$$

More compactly,

$$F(P; x, y, z) = \max(\min((P-x)/(y-x), (z-P)/(z-y)), x)$$

Where, P is a membership value

x, y and z are the elements ranges between 0 and 1

There are 4 types of fuzzy editors developed in the system. Fuzzy editor 1 comprises of input attributes, output attributes and fuzzy rules designed for the selection of RC/STEEL/PSC types of bridges. Fuzzy editor 2 is designed for the selection of RC type of bridges. Fuzzy editor 3 comprises of fuzzy rules for the selection of steel type of bridges and fuzzy editor 4 is designed for the selection of PSC type of bridges. The graphical representation of the composition of fuzzy rules is as given below in figure 9.

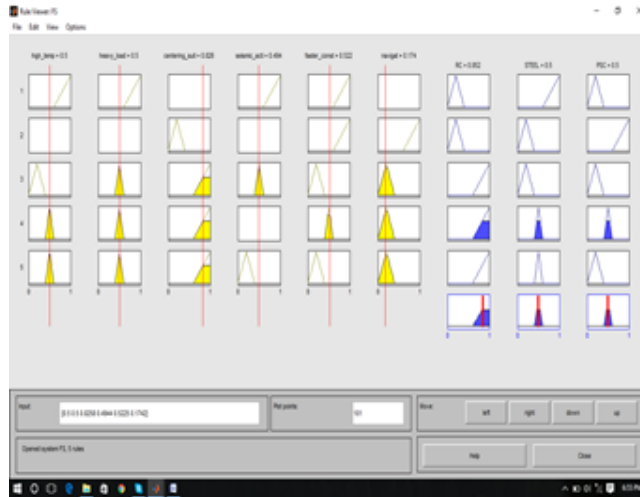


Fig. 9: Rule viewers for the selection of bridge types

Sample output of an expert system is as shown below in figure 10, 11 and 12.

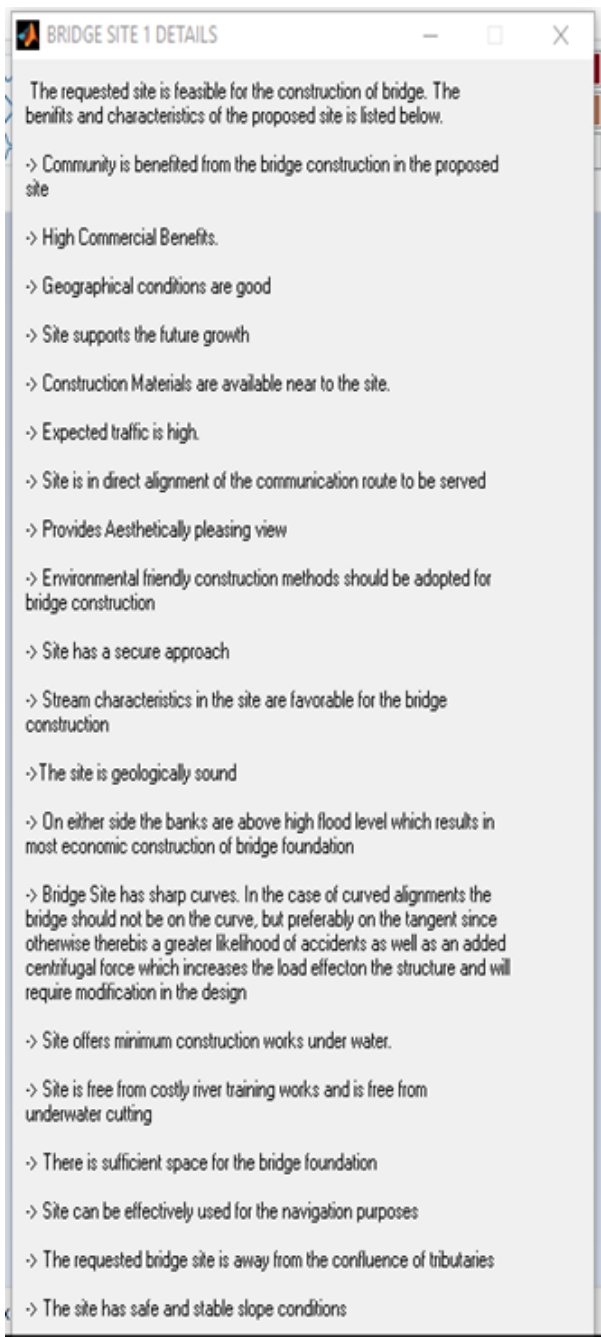


Fig. 10: Sample output of an expert system for the selection of bridge site

4. Conclusion

Based on this research work, the following conclusions are made. System is capable of handling even insufficient input data of the river bridge site with some limitations. The knowledge base component of an expert system is quite extensive consisting of the knowledge collected from experts using Fuzzy Delphi Method, textbooks and codes; in addition, practical bridge site data of nine existing bridges situated in Palakkad district of Kerala, South India. Expert system allows the user to add or delete any number of substructures from the system knowledge base. The entire structural systems work as a comprehensive package.

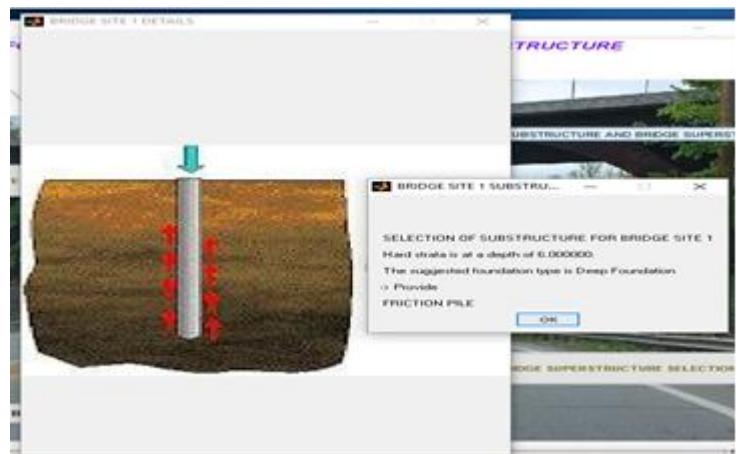


Fig. 11: Sample output of an expert system showing the best bridge substructure for the given bridge site conditions



Fig. 12: Sample output of an expert system showing the suitable bridge superstructures with their certainty factors.

5. References

- [1] Shirashi et. al., “An expert system for design planning o bridge structures”, Journal of structural engineering, JSCE, Volume 34 a, pp 551-562, May 1988.
- [2] Iwamatsu S. et. al., “Study on expert system for selection of bridge, Ministry of construction, Public works research institute, A mini work shop about expert system of bridge type selection, January 1989.
- [3] Leelawat C. et. al., Expert system for selection of bridge superstructure, JSCE, pp516-517, 1988.
- [4] Takayuki N. et. al.,” Study on practical expert system for selecting the types of river crossing bridges”, structural engineering/ structural engineering, volume 7, no. 2, pp 239-250, October 1990.
- [5] C.K. Choi and I.H. Choi, “ An Expert system for selecting types of bridges”, Computers and Structures, Volume 48, No. 2, pp 183 – 192, 1993.
[https://doi.org/10.1016/0045-7949\(93\)90411-6](https://doi.org/10.1016/0045-7949(93)90411-6)
- [6] Yoshito Itoh, et.al., “Bridge type selection system incorporating Environmental Impacts”, Journal of global environmental engineering, Volume 6, pp 81-101,2000.
- [7] Ajith Abraham, “Rule based Expert Systems”, Hand book of Measuring System Design”, ISBN:- 0-470-02143-8, 2005.